



ENGLISH

# BERARDI

FASTENERS

since 1919





Commitment, passion, and professionalism from all of us so our customer can “forget” about the management of the class C parts.  
Our goal is to become a point of reference, well known in the market, and able to innovate to anticipate what is needed.  
An initiative to look beyond our typical traits, one generation after the other.



## KANBAN SYSTEM WITH WEIGHT SENSORS

Berardi have added a further service to their already wide spectrum offered. The system mainly consists of a combination of load cells with weight detection sensors. In this way, consumption levels of Kanban items are constantly monitored.



## EASYSELF 24

The EasySelf 24 system, from the Industry 4.0 perspective, facilitates the automatic operation of the whole management flow for different items, such as: PPE, tools, accessories, stationery, first-aid objects and assorted equipment. The system ensures that each time an item is collected, such action and who did it are duly and timely recorded. EasySelf 24 communicates with the main business software programs, features a remote control system, activates alarms and alerts, manages the reordering of items to the supplier, and produces consumption statistics. All this leads to optimizing each and every activity associated to the mandatory legislation on safety at work.



## KANBAN AND KANBAN UP: TWO EXCLUSIVE SYSTEMS, ONE SINGLE GOAL



## LOGISTICS BUILT AROUND THE CUSTOMER

In a framework in which rapid responses to market needs are becoming increasingly important, an efficient logistics organization is essential in order to meet market expectations.  
Berardi's distribution system is a modern building located in Castel Guelfo, with centralized main services (Personnel, Administration, Technical, Purchasing, Logistics, and Quality), and a network of peripheral warehouses, widely covering the entire country, with stock scaled based on the needs of local customers.  
Another strong point is the business structure, which is focused on offering maximum efficiency as well as technical support service.  
This system, which is perfectly replicated in all warehouses, has a high flexibility and computerization and ensures an accurate batch traceability and, for most items, also their origin.  
We are thus able to quickly meet the specific needs of the most demanding customers in terms of customized labeling, electronic exchange / real-time information sharing, and the Kanban and Kanban Up service management.

Continuous investments in logistics and research and the development of innovative services make us the ideal partner for the management of class C parts.  
Earning the trust of a growing number of customers encourages us to continue along this path.

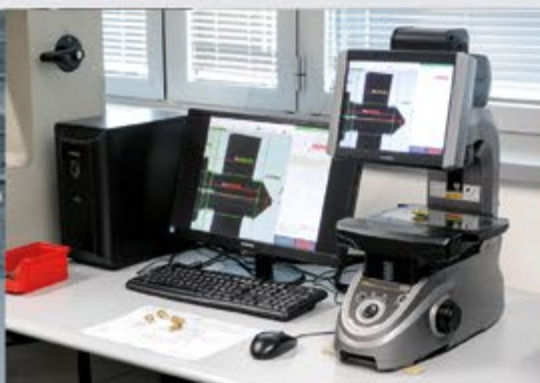
## Kanban

We offer logistics systems which are extremely adaptable, designed specifically for our customers, and intended for the “Lean” supply of class C items.  
A dedicated staff analyzes the procedures and the production flows to be improved, using a cooperating approach to determine the perfect integrated logistics solution.  
The savings achieved and the reduction in problems related to the management of these materials are the basis for the success of our logistics solutions and are our best advertising.  
The reliability of hundreds of “Kanban” services and continuous research and development of innovative solutions have made Berardi the ideal partner to achieve the level of competitiveness and flexibility required in today's market.

## Kanban Up

To ensure the simplification of our services, we have improved the integrated logistics offer, introducing Kanban Up, a new method of detection and control for logistics facilities.  
Thanks to this innovative system, our customers can constantly monitor their logistics facilities through a dedicated web portal, detect missing items, and send orders directly through their smartphone.  
Customers can also choose to enable more operators (process owners) to detect deficiencies, thus making the supply of the individual production departments autonomous, but still keeping control over it.  
This process is performed very simply through the automatic sending of emails to the purchasing manager, containing all the information about the order.





**100% OPTICAL SELECTION**



## UNIFIED FASTENERS

We have a wide range of standardized products available in stock. Even our standard products are frequently required to efficiently and securely join our customers' highly technological "assemblies".



## KIT

To provide customers with a service that can reduce the number of items handled and eliminate internal and external jobs accounts, we offer material in kit. Our professional machines allow us to create any type of kit and enable the customer to take advantage of customizations, such as barcodes on the packaging, and to have definite product costs.

## QUALITY WITHOUT COMPROMISE

Quality without compromise is not just a slogan but a strong belief the company has held since it was founded. The starting point to minimize the risk of product defects is definitely a careful selection of the supply sources obtained through audits performed by qualified staff and in-depth knowledge of the suppliers. This activity is performed by a laboratory that is among the best equipped in the field. New instruments and specific staff training are continuously added to meet the customers needs and implement new, innovative technologies. Quality system certification is further proof of the constant effort to improve the product and services offered. Equipment highlights are the traction machine, salt fog chamber, set of micro hardness machines, magnatest, digital system for optical measuring, and sorting machines with optical and laser devices to satisfy customers who require a level of defects that can be expressed in parts per million (ppm).



## SPECIAL CUSTOM PARTS

The consistent partnerships that we have developed over the years with our suppliers allow us to meet the various demands for special custom parts, competitively and with quality. We can therefore meet requests for hot moulded parts (for medium-large sizes and small series) or cold moulded parts (when quantities are more substantial), using the most economic machines for simple items and multistation machines when the structure of the parts becomes really complex. We are equally competitive in the supply of parts requiring chip removal (turned parts). We can choose traditional cam machines to reduce manufacturing costs for simple parts, or more sophisticated and complete CNC machinery when the shape and precision of the parts is paramount. We have convenient solutions even for large batches using special multi-spindle lathes. In protective coatings and materials, our experience now includes all of the most common types used on the market.





For each item we look to the most qualified producers according to strict and specific quality criteria.



**SPRINGS**



**PIPES AND ACCESSORIES  
FOR INDUSTRIAL  
AUTOMATIONS**



**FITTINGS**



**O-RING  
BONDED SEALS  
OIL SEALS**



**ACCESSORIES  
FOR THE PNEUMATIC,  
HYDRAULIC,  
AND FLUID SECTOR**

Thanks to our partnership with leading companies in the industry, we have a wide assortment of undisputed quality products: hoses; fittings; adapters; quick couplings; clamps; bolts; pressure gauges; end, filling, and venting plugs; and oil level rods and indicators.

**HYDRAULIC HOSES**





Our technicians are able to provide customized solutions to meet specific requirements.



**DOWELS  
AND ANCHORS**

**INDUSTRIAL LIFTING  
EQUIPMENT  
ROTATING EYEBOLTS LIFTING  
DEVICES ANCHOR  
DEVICES AND  
FALL PROTECTION ITEMS**



**WHEELS**



**CAPTIVE SCREWS  
ANTI-TAMPER  
SCREWS**



**SELF-LOCKING SCREWS**



**SAFETY SOLUTIONS  
FOR FASTENING  
SYSTEMS  
WASHERS AND NUTS**



**ELECTRICAL  
TERMINALS**



**NYLON SCREWS**



**CABLE GLANDS**



**GROMMENTS**



**PLUGS AND  
PLASTIC INSERTS**



**CABLE TIETS, TWIST  
LOCKS, SUPPORTS  
FOR WIRING**



**WIRE  
PIPE CLIPS**





**HOSE CLAMPS**



**SPACERS**



**MAGNETS**



**RIVETS**



**ANTI-VIBRATION  
MOUNTS**



**INSERTS, FEET  
AND BUMPERS**



**STRIKES AND LATCHES,  
RIVETS, CLIPS AND SCREW  
GROMMENTS**



**PULL HANDLES  
TUBULAR HANDLES  
RECESSED HANDLES**



**CLAMPING LEVERS  
TENSION LEVERS  
CAM LEVERS**



**LATCHES**



**JOINTS**



**GRIPS, KNOBS**



**PERSONAL  
PROTECTIVE  
EQUIPMENT**



**SPRING PLUNGERS  
INDEXING PLUNGERS  
BALL LOCK PINS**





Headquarters  
**BERARDI BULLONERIE srl**

Via San Carlo 1 Loc. Poggio Piccolo  
40023 Castel Guelfo di Bologna (BO) ITALY  
Tel. +39 0542 671911 - Fax +39 0542 671940  
international@gberardi.com - **www.gberardi.com**

**BRANCHES:** CASTEL GUELFO (BOLOGNA) - MILANO - TREVISO  
PADOVA - REGGIO EMILIA - ANZOLA EMILIA - RIMINI - PISTOIA  
FROSINONE - ANCONA - CASERTA - BARI

**FOREIGN BRANCH:** KASTAV (CROATIA)

Berardi Group Company  
**BERARDI MAROC - CASABLANCA**  
Our Moroccan branch, official distributor  
of the Berardi Group in Morocco.  
**info@gberardi.com - www.berardimaroc.com**

**Our items  
can reach  
worldwide**



25.01.2021

